

# Member Group Working Group Recommendations

Charlie Houston-Brown

Chair

# Outline Agenda

- How we got here
- What makes a better Member Group
- The process followed by the MGWG
- The 'map'
- The recommendations
  - Please note: The Community Board has to give final approval for any of these recommendations.
- Questions

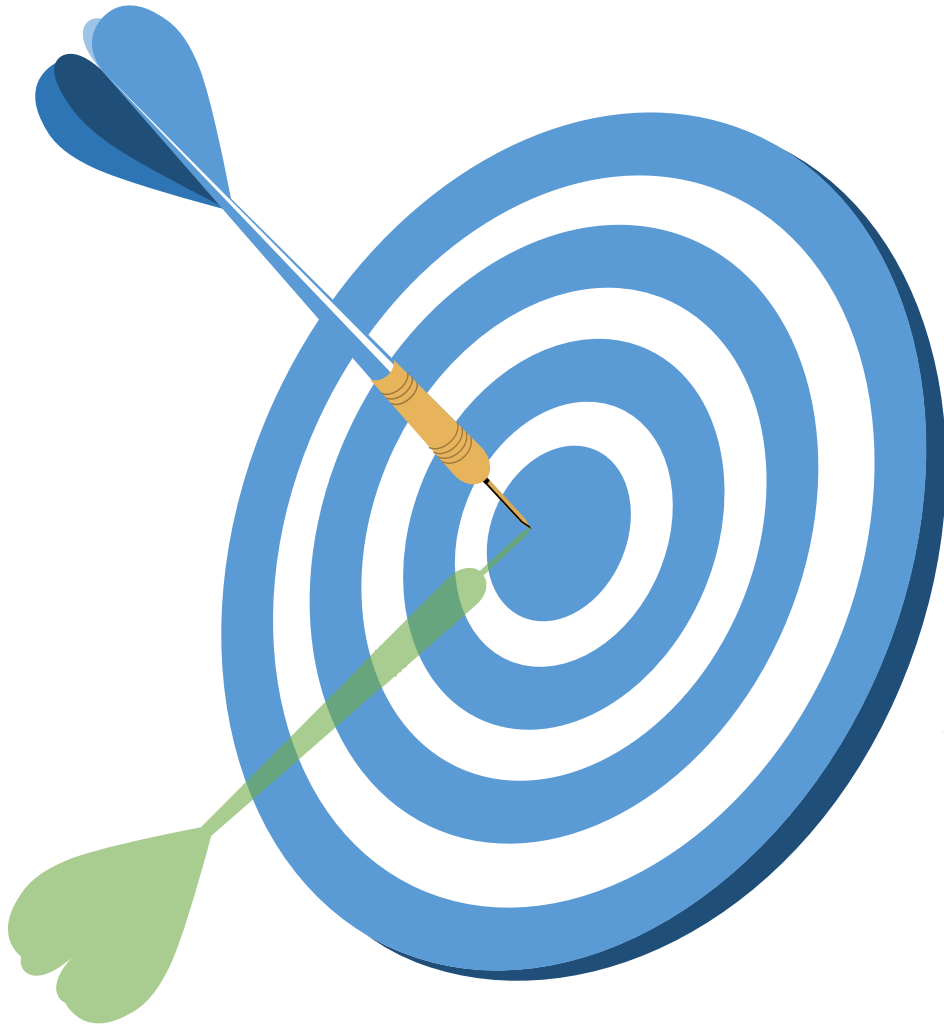
# Member Group Working Group (MGWG)

How we got here



# What makes a better Member Group

(and hopefully how to retain our volunteer resources)



## MEMBERSHIP

What makes a member



## RULES & GUIDANCE

How are member groups governed and managed



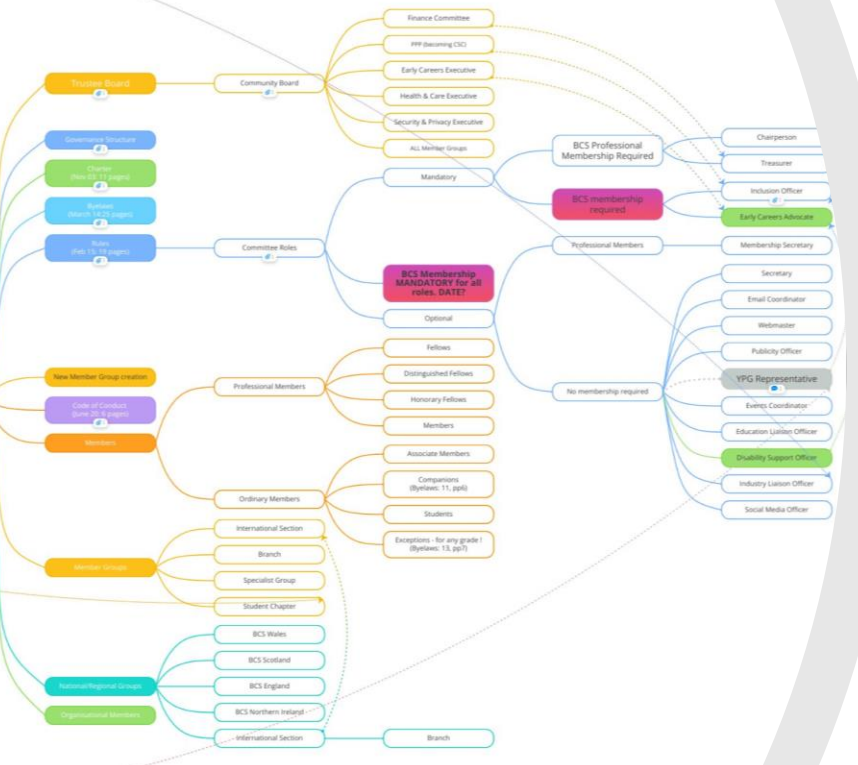
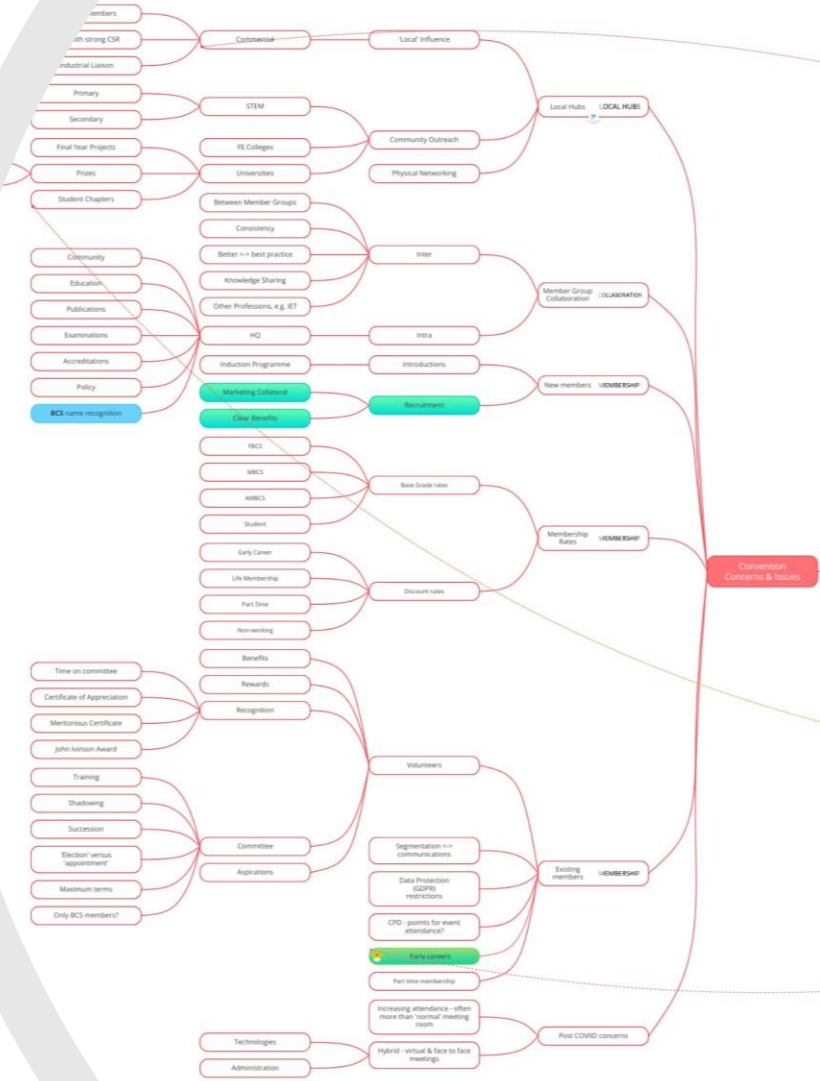
## LOCAL HUBS

Making the Branch network relevant to their 'patch'



## COLLABORATION

How to work better together. Branches and SGs in particular



## Member Group Key Issues

Four teams of 'Twins'

The teams of twins reviewed issues and made recommendations to the full MGWG committee

Initial 'Twin' responses

Review by MGWG Committee

The full MGWG committee made a number of iterations across the 'twins' recommendations.

Review of existing plans and priorities to identify overlap and issues already being addressed

Understand 'in flight' HQ projects

Review by PPP

Recommendations presented with PPP for sense check

Final recommendations published for consultation with wider membership via the Volunteer Portal

Consult

**Consultation open until  
Friday 29<sup>th</sup> October 2021**

# Review of 'map'

[https://volunteer.bcs.org/sites/default/files/bcs-member-group-review\\_map\\_V09\\_FINAL.pdf](https://volunteer.bcs.org/sites/default/files/bcs-member-group-review_map_V09_FINAL.pdf)

# Review of Recommendations

[https://volunteer.bcs.org/MGWG\\_Recommendations-Introduction](https://volunteer.bcs.org/MGWG_Recommendations-Introduction)



Questions